

WV Capitol Parking Garage

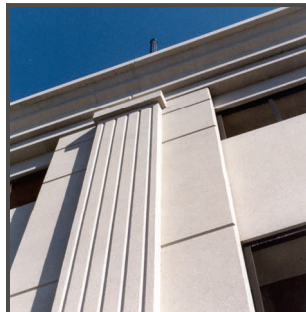
Approximately one year after design/build bids were taken by the State of West Virginia, Sidley Precast successfully completed erection of a 790-car parking garage at the State Capitol. 650 pieces of structural and architectural precast concrete components were cast at both Sidley plants in Thompson, Ohio, and Youngwood, Pennsylvania. All of the exterior precast concrete spandrel beams and panels, column panels and stair and elevator wall panels along with the interior lite and shear wall units were cast in Thompson. The pre-topped double tee deck members, columns, beams, stairs and landings were poured in Youngwood.

This project was constructed on an existing parking lot adjacent to the capitol building at the intersection of Greenbrier Street, Piedmont Road and Interstates 64 and 77. The design, appearance and compatibility of the structure with the Capitol Complex were highly important and seriously scrutinized not only by the state, but also by the Kanawha Valley Historical and Preservation Society.

The project architect, Associated Architects, along with the Sidley team, created the special and customized architectural features incorporated into the precast concrete, such as shaped column cover panels with vertical fluting, and spandrel beams and panels at the roof and stair towers with horizontal projections and large cornices. Most exterior precast components had reveals and other accents which tended to give the garage an older building appearance with limestone walls.

This four story, four bay wide, 240 ft. by 248 ft. garage included 294 precast/prestressed double tees totaling 172,000 sq. ft. The typical double tees were 11ft. wide and 60 ft. long, allowing for a clear span in the individual parking bays. Sidley's early pre-bid and pre-design participation in the structural layout of the garage resulted in project cost savings for the foundations by utilizing larger than normal bay sizes. In addition to this early stage involvement with the design/build team, Sidley also was the engineer for the garage structure.

Sidley Precast was very excited and grateful to have had the opportunity to be part of the team constructing this landmark garage structure. It has received many compliments from the Charleston community. Design/build construction plays an ever-increasing role in the construction industry and Sidley has targeted that type of work as an important part of its future.



Precast Concrete column panel detail.

Architect
Associated Architects,
Charleston, WV

Contractor
BBL-Carlton LLC,
Charleston, WV

Owner
State of WV Department of
Administration,
Charleston, WV